

ONLINE PUBLIC MEETING

Your health, our future

**BCH's Community Health
Needs Assessment**



Grant Besser

Vice President of Public Affairs and
President of BCH Foundation



Identify our
community's needs
through data analysis



Solicit
community
feedback



**Develop and
Document**
implementation plan



**Implement plans to
improve the health of
the community**

1

Overview of the 2023-2025 **Community Health Needs Assessment**

2

Updates on **the Hospital Transformation Project**

3

Questions and Feedback

4 Priorities for 2023-2025



**Mental health, chronic
pain management and
substance abuse**



**Wellness, preventative
health and access to
care**



**Chronic disease
management**



**BCH and Provider
Workforce**

Live in chat:

Will be answered at the **end of the presentation**

Submit online:

bch.org/chna

Bch.org/htp - for HTP specific feedback

Email for post-event questions:

chna@bch.org

htp@bch.org - for HTP specific feedback

Robert Vissers, MD, MBA, FACEP

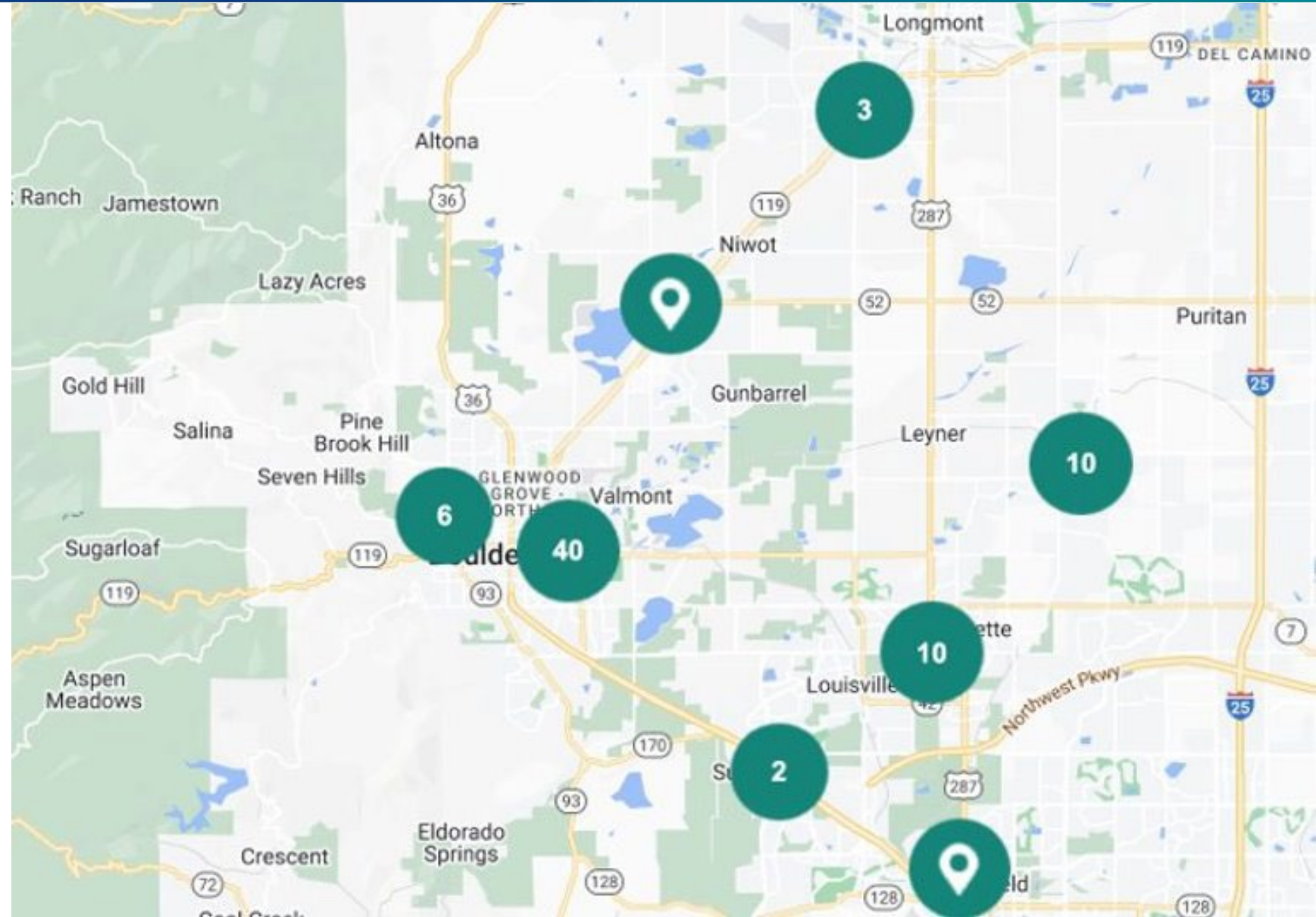
President and Chief Executive Officer of Boulder
Community Health

Boulder Community Health

Partnering to create and care for the healthiest community in the nation



BCH is the **largest care provider** in our primary service area



Hospital-Based Services at Foothills Hospital, Erie Medical Center and Community Medical Center in addition to...

149

Inpatient beds

25 bed

**Bed level II Trauma Center
& Emergency Department**

8

**Primary care
clinics**

1

**Urgent care
clinic**

15

**Specialty care
clinics**



Awards & Accolades



LISTED AMONG NEWSWEEK'S
America's
Best Maternity
Hospitals 2022

ONE OF LEAPFROG,
MONEY MAGAZINE'S
Best Hospitals for
Maternity Care

CHIME
Digital Health
most wired.
Survey 2022

Jackie Attlesey-Pries, MS, RN, CENP

Vice President of Operations
and Chief Nursing Officer

Need identified

Behavioral Health, Chronic Pain Management and Substance Use Disorders

- Increased access to mental health care
- Accessible and innovative mental health services
- Programs responsive to changing patient needs
- Coordinated, seamless navigation across the continuum of care
- Access to services in a timely manner
- Align and integrate services with community partners
- Prevention and treatment of Substance Use Disorder, and chronic pain management using ALTO (alternatives to opioids)

Identified Priorities for 2023-2025

- Transform the BCH Behavioral Health Service Line
- Explore the expansion of our Substance Use Disorder (SUD) services



Service line transformation



Della Cava Family
Medical Pavilion



Medically monitored withdrawal
management



Behavioral Health Navigator



Integrated Behavioral Health in
Primary Care Clinics



Community Support Through BCH
Foundation



Partial Hospitalization and Intensive
Outpatient Programs

- Training providers to provide medication-assisted treatment for opioid dependence
- Staff in primary care clinics skilled at supporting patients in managing chronic pain using ALTOs
- Advanced Practice Clinicians with expertise in pain management embedded in two primary care clinics
- PILLAR (Prevention and Intervention for Life-Long Alternatives & Recovery) Program
- Referral to BCH's Center for Mind-Body Medicine

Opioid reduction programs

- Through Naloxone & Harm Reduction Trainings for BCH staff
- Ongoing educational outreach to physicians, dentists and oral surgeons regarding non-opioid pain medications.
- Mindfulness-based pre-operative educational program
- Evidence-based post-operative opioid prescribing
- Reducing new opioid prescriptions by offering non-opioid medications in the ER, inpatient and ambulatory settings
- In our Labor and Delivery suites protocols that decrease patient reliance on opioid medications during recovery
- Referring patients to BCH's Center for Mind-Body Medicine

To submit questions & feedback



Live in chat:

Will be answered at the **end of the presentation**

Submit online:

bch.org/chna

Email for post-event questions:

chna@bch.org

Elizabeth Cruse, MD

Medical Director of Quality Improvement and Population Health
for BCH and the Boulder Valley Care Network

Wellness, Preventative Health & Access to Care

We had an **40% increase of annual wellness visits** last year



Identified Priorities for 2023 - 2025

- Health Equity
- Social Determinants of Health
- Population outreach for preventative care services
- Women's health
- Aging of our population

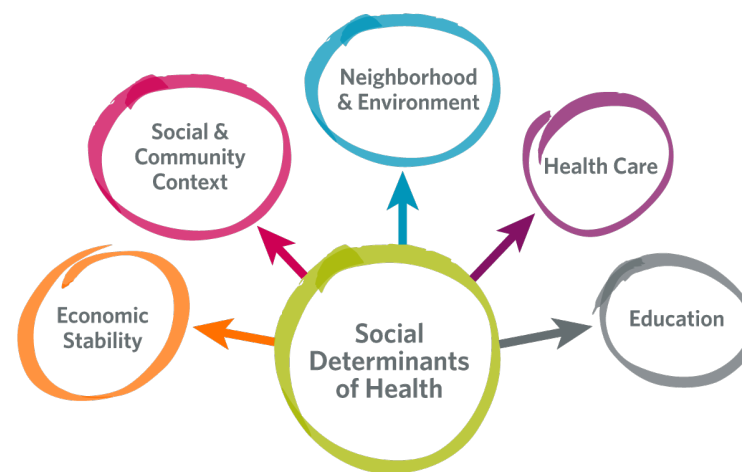
When all people have the opportunity to attain their **full health potential** and **no one is disadvantaged** from achieving this potential because of their social position or other socially determined circumstance.



- BCH has signed on to the American Hospital Association's Health Equity Transformation pledge:
 - Identifying a staff member to lead activities to reduce health care disparities
 - Assessing a patient's health-related social needs
 - Analyzing quality and safety data to identify disparities
 - Developing an action plan to reduce health care disparities, which includes employee training



Economic and social conditions that influence the health of people and communities.



- Implemented SDOH screening and workflows within our primary care practices
- Evaluating screening for inpatients at Foothills Hospital and processes of referrals
- Transitional care nurses provide education and support to our highest risk patients
- Partnering with community agencies to collaborate on decreasing social and economic barriers that impact health

Outreach for preventative care

- BCH now sees over 67,000 patients within its primary care clinics.
- Preventative services are key to our vision of creating the healthiest community.
- Patients who have been identified as having “gaps in care” are contacted via MyBCH, by phone call or mail.
- Specific programs to improve influenza vaccination rates and HPV vaccination rates.



- Enhanced focus on caring for women throughout all phases of life
- Special expertise in
 - osteoporosis prevention and treatment
 - menopausal symptom management
 - gynecologic surgery
 - pelvic floor care
 - women's heart disease



Aging of our population

- Latest diagnostic and medical technologies:
 - Heart and lung disease, prevention and treatment
 - Surgical services
 - Joint replacement
- Population health outreach
- Palliative care
- Fall risk programs
- Access to health care
- New physical locations



Live in chat:

Will be answered at the **end of the presentation**

Submit online:

bch.org/chna

Email for post-event questions:

chna@bch.org

Ben Keidan, MD

Vice President and
Chief Medical Officer of Boulder Community Health

2022 priorities recap



BOULDER VALLEY CARE NETWORK



- 390+ Physicians
- 660+ Providers
- 40+ Specialties



- Risk Based Contracts
- Shared Savings Contracts
- Medicare / Medicaid



- Employee Focused Programs
- Preventative Care



- Partnerships
- Locally Based

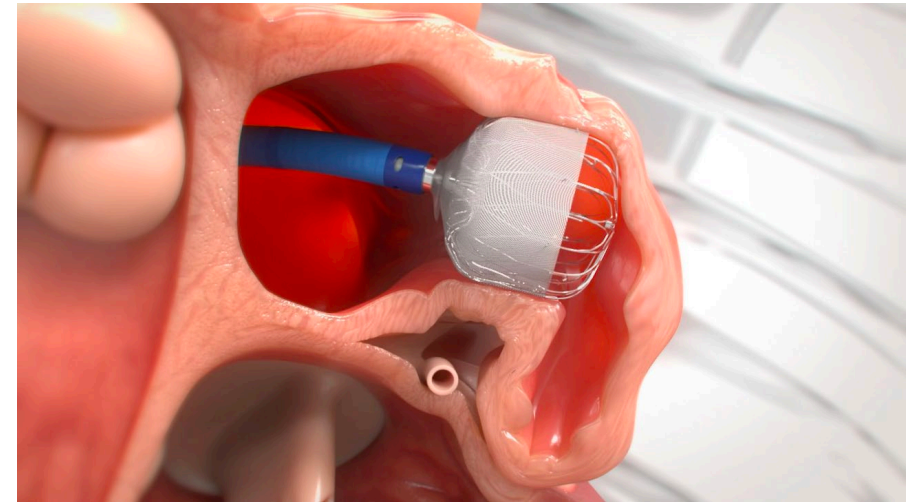
Need identified

Chronic disease management

- Enhanced oncology services
 - Addition of state-of-the-art radiation therapy and PET CT equipment in partnership with Rocky Mountain Cancer Centers
- Multiple programs to assist patients in accessing care and improving quality of life
- Care navigation, diverse oncology including XRT, medical and surgical oncology



- Advanced/subspecialty cardiology including structural heart, CHF, EP, CTS, and general cardiology
- Navigation and integrated with BCH integrated care services



- Integrated Boulder Neurosurgical and Spine Associates of Boulder Community Health
- Elaine Myers Fund to assist brain injury patients with any care-related needs
- Partnership with CU SOM ortho spine and NS
- Exploring ALTOS/ERAS/mindfulness approaches to manage acute and chronic pain



- Onsite RN Care Coordinator to educate and coach patients
- Diabetic education program
- Ambulatory pharmacist focused on diabetes and depression care
- Adding capacity within our primary care clinics to manage dementia
- Integrated BH



- Transitional care nurses provide education and support to highest-risk patients after a hospitalization
- In the early stages of identifying the use of a Community Based Resource Referral System
- Team-based approach to highly complex care to reduce readmission
- Learning what matters to our patients to provide care at the right time/place

- Meeting the needs of the community with **provider-led education**
- General Health Education
- Childbirth and Parenting Education
- Injury Prevention Education
- Pain management, mindfulness-based educational program



Live in chat:

Will be answered at the **end of the presentation**

Submit online:

bch.org/chna

Email for post-event questions:

chna@bch.org

Hospital Transformation Program

The Hospital Transformation Program (HTP) aims to improve the quality of hospital care

- Finalize the behavioral health & substance use screening.
- Educate providers and patients to alternatives to opioid recommendations and explore novel interventions.
- Monitor avoidable cost reduction opportunities.
- Implement SDOH in the inpatient setting and develop data reports.
- Evaluate the LOS data and outliers, high-cost medical interventions, medical necessity denials and routine case reviews and analysis.

- Develop a data dashboard to assist with evaluating readmission patients specific to this patient population. Develop committee objectives and goals to reduce readmissions.
- Develop a project plan to implement the summary of care records process.
- Develop a project plan to implement a process to communicate follow-up appointments to the RAE.
- Update stroke provider order sets to include statin medication therapy.

Questions about HTP

Live in chat:

Will be answered at the **end of the presentation**

Submit online:

bch.org/htp

Email for post-event questions:

htp@bch.org

Sarah Meshak

Vice President and
General Counsel of Boulder Community Health

BCH and Provider Workforce

Workforce Transformation

Multi-year collaborative effort focused on **improving and streamlining workflows and developing high functioning teams** as we continue to address increased labor shortages.



Hoover Family Center for Education Excellence: Expanded education assistance

- Increased tuition reimbursement - Tuition assistance, books, and fees for degree programs
- Continuing education reimbursement - For training required to maintain licensure or certification
- New certification reimbursement - For obtaining or renewing certification

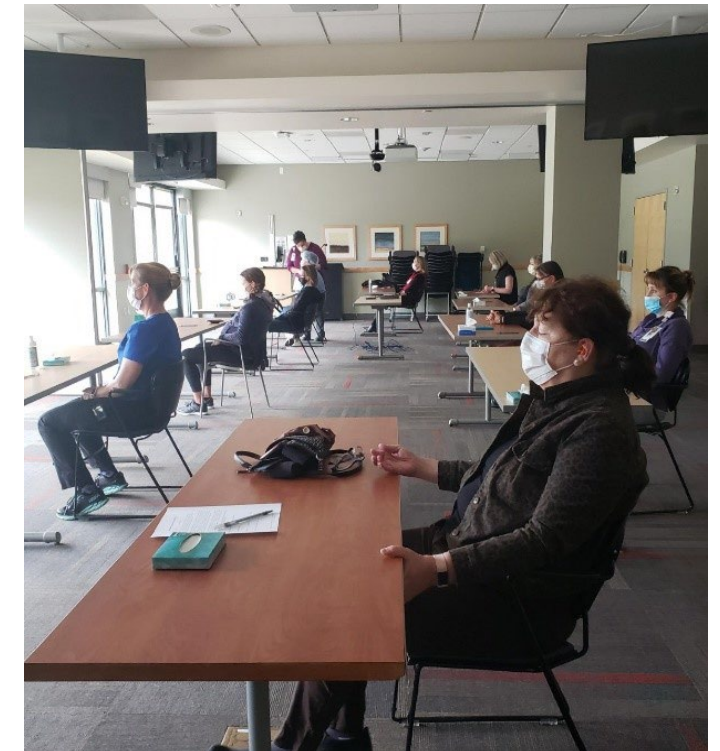
BCH Ambassador Scholarships

Each year the BCH Ambassadors as part of the BCH Foundation award scholarships to staff for continued education

Creating a culture of belonging at BCH with all staff training on courses including:

- Social Identity, Power and Privilege
- Racism and the 4 I's of Oppression
- Sex, Gender, Gender Expression, and Sexual Orientation
- Allyship, Cultural Humility/ Responsiveness, and Belonging
- Sustaining DEI Practices in Organizations

Wellness Team Programming



This program assists employees in times of **unforeseen financial hardships that can arise from a personal tragedy** such as a death or sudden illness in the family, loss or damage to a home from a fire, or other natural disasters.

Live in chat:

Will be answered at the **end of the presentation**

Submit online:

bch.org/chna

Email for post-event questions:

chna@bch.org