



Hospital Community Benefit Accountability Report – Additional Information Submitted August 31, 2021

Boulder Community Health is presenting its 2019 990 as it is the most recent filed with the IRS. In addition to its submission of required documentation, Boulder Community Health wishes to submit this document to further elaborate on three areas of community benefit not included within the 2021 HCBA Annual Report Template and not necessarily thoroughly represented within the BCH 2019 990:

Programs that Address the Social Determinants of Health Programs that Address Health Behaviors or Risk Free or Discounted Health Care Services

The Boulder Community Health CHNA process identified the greatest needs within our community.

1. Chronic disease management and traumatic injury
2. Mental health including chronic pain management and substance abuse
3. Wellness and preventative health including aging of the population and access to care
4. Community education

COVID-19 Response

Throughout the pandemic, BCH has performed as a community leader and resource.

COVID-19 Response: Testing

BCH began wider scale testing in March of 2020 and has performed over 42,443 COVID-19 (SARS-CoV-2) tests at drive up stations and lab locations at its facilities.

COVID-19 Response: Vaccination rollout across the community

In early 2021, our COVID-19 Response Fund focus shifted to the successful community-wide rollout of the vaccine. Due to our strong preparation throughout the fall, we established a mass vaccine clinic at the Della Cava Family Medical Pavilion starting in December 2020. The BCH vaccine clinic has administering over **90,000** doses of vaccine to over 46,000 community members as of August 12th, 2021. The BCH Foundation raised over \$80,000 to help support BCH in covering the costs of running the vaccine clinic to benefit the community.

Mobile Vaccination

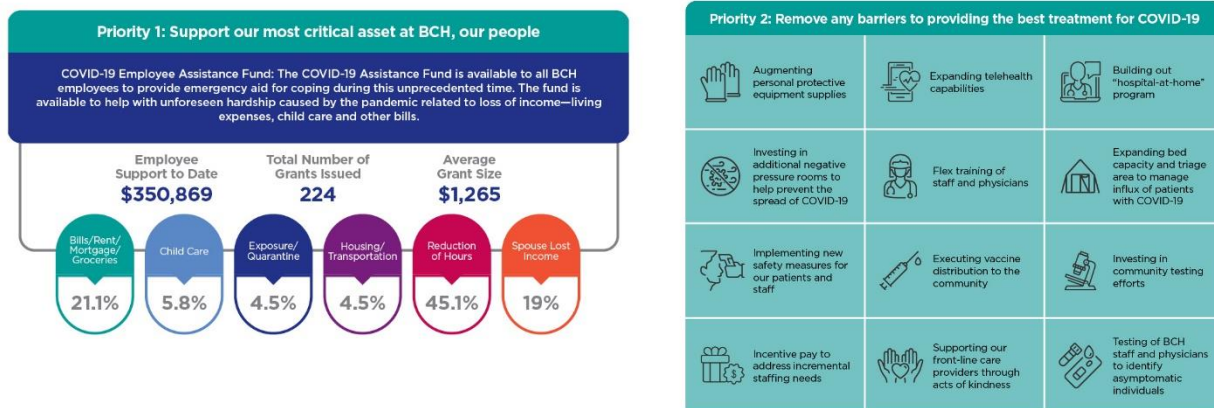
In partnership with Gebhardt Volkswagen and Boulder County Public Health, BCH launched mobile COVID-19 testing (followed by mobile vaccination) to test and vaccinate underserved communities and rural areas within Boulder County. 7554 tests and 400 vaccinations have been performed by BCH using the Mobile Unit as of August 19, 2021.

Daily Camera story: <https://www.dailycamera.com/2021/03/12/boulder-community-health-partners-with-county-to-launch-mobile-vaccine-unit/>

BCH Foundation COVID-19 Response Fund:

With the sudden emergence of the pandemic, the BCH Foundation pivoted fundraising efforts to focus on the needs of BCH by creating the COVID-19 Response Fund focusing on two priorities: support our most critical asset, our people, and removing any barriers to providing the best treatment for COVID-19. The BCH Foundation raised \$1.73M from 965 donors. Through this support The BCH Foundation supported BCH's significant investment in testing capabilities, expanding telehealth access, supply management, space capacity and flex training for our staff and physicians. Individuals and organizations rallied to sew almost 5,000 masks and more than 31,000 packages of PPE were donated by local scientists, companies, individuals and families. Over 35,000 meals were delivered to frontline clinicians and responders through the Feed the Frontlines Boulder initiative.

Below are graphics that further illustrate the COVID-19 Response Fund priorities and what the support enabled us to do in support of BCH:



Community Education Programs that Address Health Behaviors or Risk

Community Health Lectures

In the period July 2020 to June 2021, 30 community health talks were held by BCH and its medical staff with attendance totaling over 17,750 (virtual livestream and later review). With COVID-19, the community health talks had to switch from an in-person lecture format to online meetings which actually increased attendance. Specific topics included:

- COVID-19
- Mental Health
 - Childhood Trauma
- Addiction
- Chronic disease
 - Lung Cancer
 - Heart Disease
 - Colon Cancer
 - Chronic Pain
 - End of Life Care

- Memory Loss
- Sleep Apnea
- Diabetes
- Prostate Cancer
- Breast Cancer
- Osteoporosis
- Diet
- Vaccination
- Hip and Knee Pain
- Rotator Cuff Injury
- New Technology
 - Advances in Cataract Treatment
 - Spine Treatment

This year BCH introduced survey questions to gather feedback as to if the topic achieved learning objectives and 90% of the attendees affirmed that they had.

Elevate Education Series

Launched in October of 2020, Elevate is Boulder Community Health Foundation's education series that is centered on elevating the conversation around critical topics shaping the future of health care in our community.

October 2020:

- COVID-19: Changing the Future of Health Care (*60 views on YouTube, ~100 attendee's night of virtual event*)
 - Insightful discussion on the COVID-19 pandemic and how it is changing the future of health care. Topics will range from telehealth, building on our infectious disease expertise at BCH, advance care planning as well as the collaborative approach BCH has taken as an organization at the local and state level to combat the virus.
- Opioid Epidemic: A Public Health Crisis (*93 views on YouTube, ~100 attendee's night of virtual event*)
 - Insightful discussion on the opioid epidemic, including timely conversations underway at the federal, state and local levels as well as work that is happening at BCH to provide resources and reduce the stigma surrounding the epidemic. Topics will range from action being taken by the Colorado Attorney General's office to alternative treatment pathways to addressing the barriers surrounding the public health crisis.

January 2021:

- Conversation between Attorney General of Colorado, Phil Weiser and President & CEO, Dr. Robert Vissers (*119 views on YouTube, ~250 attendee's night of virtual event*)

Hot topics included:

- Actions being taken by the Colorado Attorney General's office regarding the COVID-19 pandemic
- Mental health and addiction
- Protecting vulnerable hospitals, including those which are independent
- Protecting the Affordable Care Act and the fight for affordability

- Work to drive down health care costs

May 2021:

- Boulder Community Health becomes a Watson Caring Science Institute Affiliate (WCSI) (50 views on YouTube, ~150 attendee's night of virtual event)
 - Inspiring conversation with Jean Watson, Stanford Health Care and Boulder Community Health to learn more about how caring science is changing the future of health care locally, nationally and around the world.

Community Health Events

- Walk with a Doc had to pivot due to COVID-19 and became Be Well Saturdays with 6,595 attendees in the one-year period
- Cancer Support 585 attendees
- Trauma prevention, CPR, and Stop the Bleed 1,951 attendees
- Birth and New Parent 1,026 attendees
- Opioid and Chronic Pain 198 attendees

Programs that address Social Determinants of Health

Bridge House

Bridge House provides a range of programs and services to help adults experiencing homelessness have access to the resources they need for a better future. Their programs are arranged across our *Bridge of Opportunity* spanning from basic needs to employment and housing.

BCH continued its support of Bridge House because homelessness is one of the defining determinants of health in a population. By supporting Bridge House, BCH is impacting the health of its community.

Link to BCH Community Partnership: Bridge House video:

<https://www.youtube.com/watch?v=DJmVRPrcXmE&feature=youtu.be>

BCH Partners with Bridge House by:

Providing grant funding for a BCH RN Case Manager to work on-site at Bridge House to perform clinical and psychosocial assessments, medical triage, health education, chronic disease care planning, patient advocacy, and navigation between community care settings.

Utilizing BCH staff resources to engage with Bridge House clients and perform on-site assessments to decipher what community resources would be appropriate and available for the individual clients' needs.

Underwriting Bridge House Community Table Kitchen Cafe a partnership between Bridge House, Boulder Community Health and the BCH Foundation

Hiring graduates of Bridge House's Ready to Work program for full-time positions in BCH

The BCH Foundation - The Community Collaboration Fund

In support of Boulder Community Health's vision of partnering to create and care for the healthiest community in the nation, in 2018 the BCH Foundation established the Community Collaboration Fund. Whether it's partnering in support of mental health, playing a role in caring for underserved populations, improving patient experience, or educating our community, there are dozens of BCH

partnership opportunities that arise on an annual basis to enhance the treatment and care of our community in the areas of social determinants of care and free or discounted health services. Through the Community Collaboration Fund, the BCH Foundation is redefining the power of partnership to improve the quality of life for all in our community.

The BCH Foundation supports the Community Collaboration partnerships by funding over \$300,000 annually to ignite the programs mentioned below. These programs are also referenced to BCH CHNA identified need and HCBA:

Name of program	Description
<p>Boulder County AIDS project and BCH’s Beacon Center for Infectious Disease</p> <p><i>(Chronic Disease Management – BCH CHNA)</i></p>	<p>Together, Beacon and the Boulder County AIDS Project (BCAP) have earned high regard in the state of Colorado for exceptional wrap around care for people living with HIV. Based on the concept of Treatment as Prevention (TasP), this working partnership has helped to reduce HIV transmission in the service area shared by Beacon and BCAP. The grant supports expanded programming of: HIV Homeless Care Continuation Program, HCV linkage to Care Program, and Medical Intervention for People Who Inject.</p>
<p>Blue Sky Bridge</p> <p><i>(Traumatic Injury – BCH CHNA)</i></p>	<p>Partnership to support and promote the new Pediatric Victim Services Medical Program. This program makes it possible for those children to receive an on-site medical examination. By offering clients a continuum of care that includes medical treatment, during and after the investigative process, Blue Sky Bridge and BCHF are working together to ensure that children are receiving the best possible care in allegations of child abuse.</p>
<p>Bridge House – See Case Study Below</p> <p><i>(Social Determinants of Care - HCBA)</i></p>	<p>Working to better serve those experiencing homelessness in the Boulder community through BCH integration into the Coordinated Entry Program. BCH’s goal in participating is to treat patients where they are and avoid unnecessary emergency room visits.</p>
<p>Boulder Shelter for the Homeless</p>	<p>With support from The Oscar & Elsa Mayer Family Foundation, the Boulder Shelter for the Homeless (BSH) is piloting a program to work with Boulder Community Health (BCH) with a focus on placing the highest utilizers of hospital services into stable housing as a means of addressing both their homelessness and their medical conditions.</p>

<p>Community Medical School <i>(Community Education - HCBA)</i></p>	<p>This project will provide training for community participants in the following areas: compressions only CPR, hemorrhage control (Stop the Bleed), and navigation of active harmer/shooter situations. By providing education in these three areas, participants will learn safe techniques to transform from “bystanders” to “immediate responders” during emergencies before public safety agencies arrive.</p>
<p>Community Outreach Coordinator <i>(Community Education – BCH CHNA)</i></p>	<p>A two-year grant supporting incremental hours for a coordinator to provide strategic direction, coordination and expertise to multiple existing BCH community education programs in order to expand their impact on community health, improve their strategic focus and increase related patient revenue.</p>
<p>DIATIA <i>(Chronic Disease Management – BCH CHNA)</i></p>	<p>The Boulder Valley Care Network (BVCN) Lifestyle as Medicine Program (LAMP) is an evidence-based Intensive Lifestyle Intervention (ILI) program aimed at enhancing the overall health of Boulder Community Health (BCH) employees. The physician-led program leveraged current thinking on cognitive-mindfulness therapy as the transformative element in the battle against lifestyle diseases. The 9-month program was led and proctored by community healthcare professionals, and comprised of both group and individual one-on-one evaluation, training and education sessions.</p>
<p>EPIC Community Connect</p>	<p>Establishing a framework and program under which BCH can become the hub that connects the entire Boulder medical community through a single electronic medical record platform, making it seamless for patients to move between local providers. The Community connect program would allow BCH to offer our world class electronic health record (EHR) to community clinics that would not otherwise be able to afford the EHR.</p>
<p>Feed the Frontlines Boulder <i>(Emergency Response)</i></p>	<p>Community coming together to donate meals from local independent restaurants to health workers on the frontlines. Health workers get a nourishing meal, and local restaurants get badly needed business to keep running and keep staff employed.</p>
<p>Growing Up Boulder</p>	<p>Sponsored Growing Up Boulder (GUB), Boulder’s non-profit child- and youth-friendly city initiative,</p>

<i>(Community Education – BCH CHNA)</i>	produced the nation’s first printed, bilingual child-friendly city map in Spring 2019.
<p>Helmet program – trauma outreach/injury prevention</p> <p><i>(Community Education and Traumatic Injury- BCH CHNA)</i></p>	Increase knowledge and awareness on basic safety measures through the use of proper fitting helmets, etc. By supplying helmets and education, BCH will decrease injury or the severity of injury caused by preventable occurrences.
<p>Love for Lily</p> <p><i>(Mental Health and Chronic Disease Management- BCH CHNA)</i></p>	The Love for Lily grant will go to develop and implement an ongoing in-unit support program for families with children hospitalized in the neonatal intensive care unit of Boulder Community Hospital’s Family Birth Center (Birth Center). The program will provide an in-unit weekly group support meeting open to all parents of NICU babies at the Birth Center. During meetings, parents will be coached in coping and relationship skills in a welcoming and safe space to share and process their birth experience, NICU journey, and all of the many challenges and hurdles that families may experience in the NICU.
<p>Queer Asterisk</p> <p><i>(Community Education and Social Determinants of Care – BCH CHNA and HCBA)</i></p>	Provide didactic, interactive education for frontline staff and the leadership team about the care and concerns of LGBTQ patients and their families. The training will also give staff the skills and tools needed for comprehensive support for LGBTQ patients.
<p>Rise Against Suicide</p> <p><i>(Mental Health, Health Behaviors, and Risk – BCH CHNA)</i></p>	Provides free therapy sessions to uninsured or underinsured at-risk youth suffering from depression and suicidal ideation at BCH Primary Care clinics.
<p>There with Care</p> <p><i>(Social Determinants of Care - HCBA)</i></p>	Providing referred BCH patient families with babysitting services, grocery deliveries, prepared meals, housecleaning, and more to help lighten the family’s load to help them focus more time and energy on their loved ones.
<p>Walk with a Doc</p> <p><i>(Community Education – BCH CHNA)</i></p>	Community Health and the City of Boulder partner together to walk with a doc and take a step toward better health. This is a FREE community program to see how easy it is to get healthy and prevent disease.

Free or Discounted Health Care Services (Uncompensated Care)

The Boulder Community Health Foundation supports Boulder Community Health through various programs to help cover services that do not get reimbursed when a patient does not have insurance and cannot afford to pay the cost of care. In the last year, the BCH Foundation has supported this type of care in a large way by contributing over \$500,000 in support of the hospital system through the following programs:

Program name:	Description:
Anchor Point Mental Health Endowment <i>(Mental Health – BCH CHNA)</i>	Offers grants that will enable individuals to receive mental health care and support services that would otherwise not be available to them. These grants are being made across four core priority areas: transitions, treatment, health and wellness and education.
Breast Cancer Treatment Fund <i>(Chronic Disease Management- BCH CHNA)</i>	The Breast Cancer Treatment Fund assists breast cancer patients undergoing treatment. Patients like Mercedes Alvarez: “They told us that the financial side of things should be the least of our considerations. We needed to worry about treating the cancer and not worry about what was going to happen to us financially because of the cancer,” says Greg Bowles, Mercedes’ husband.
Pediatric Rehab Scholarships <i>(Chronic Disease Management- BCH CHNA)</i>	Helps families that are unable to afford treatment at the BCH pediatric rehabilitation center.
Red Lipstick Fund <i>(Chronic Disease Management- BCH CHNA)</i>	Offer financial assistance to those in need while receiving treatment for cancer at the Cancer Center at Tebo Family Medical Building and BCH.
We Care	Supporting BCH in covering uncompensated care (patients that do not have insurance and cannot afford to pay the cost of care).